



Cruising guide to The Similan and Surin islands Thai Chart 307

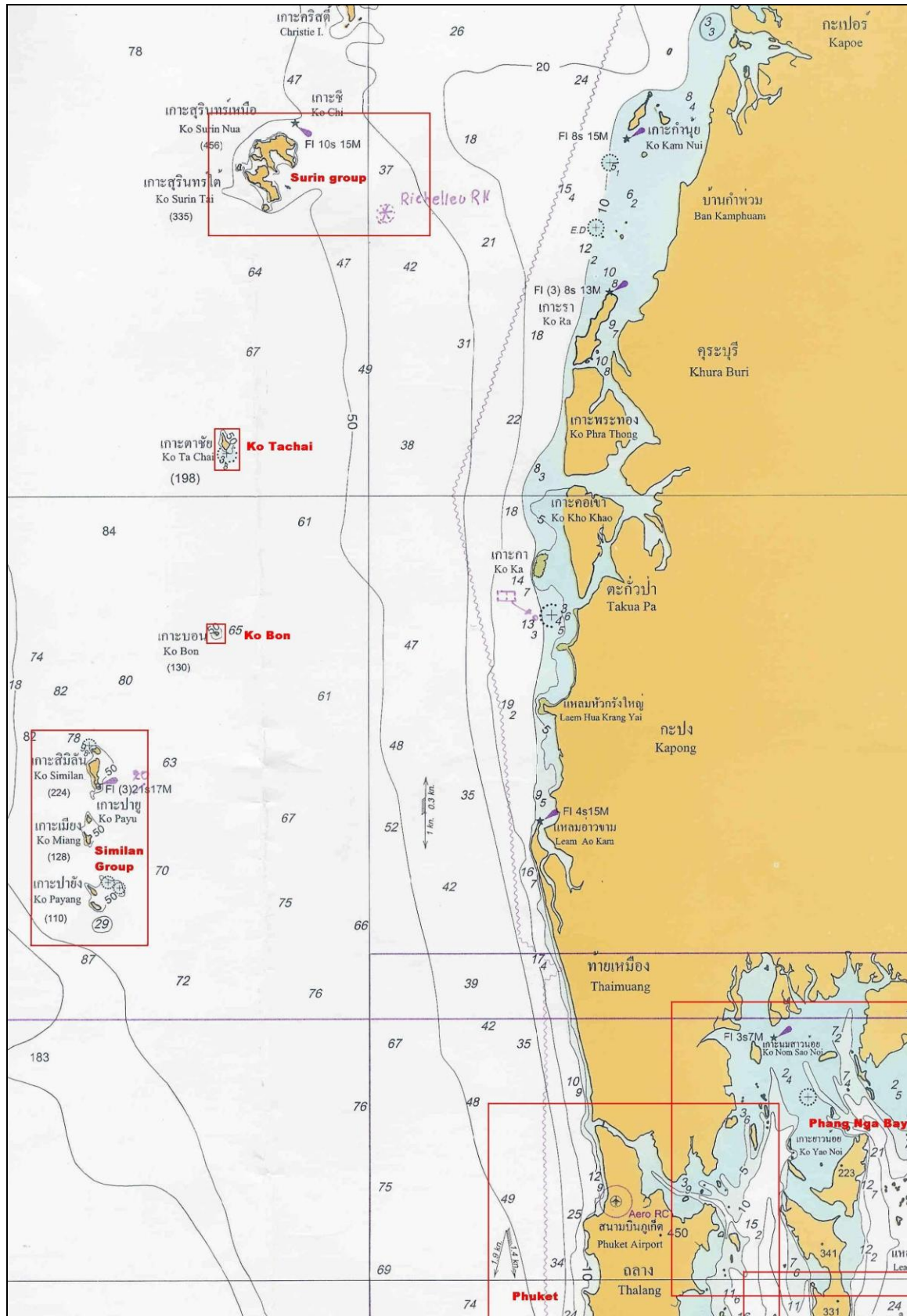


These notes are provided as a supplement to navigational information provided during your SunSail chart briefing and must be used in conjunction with the Thai Chart's provided with your yacht.

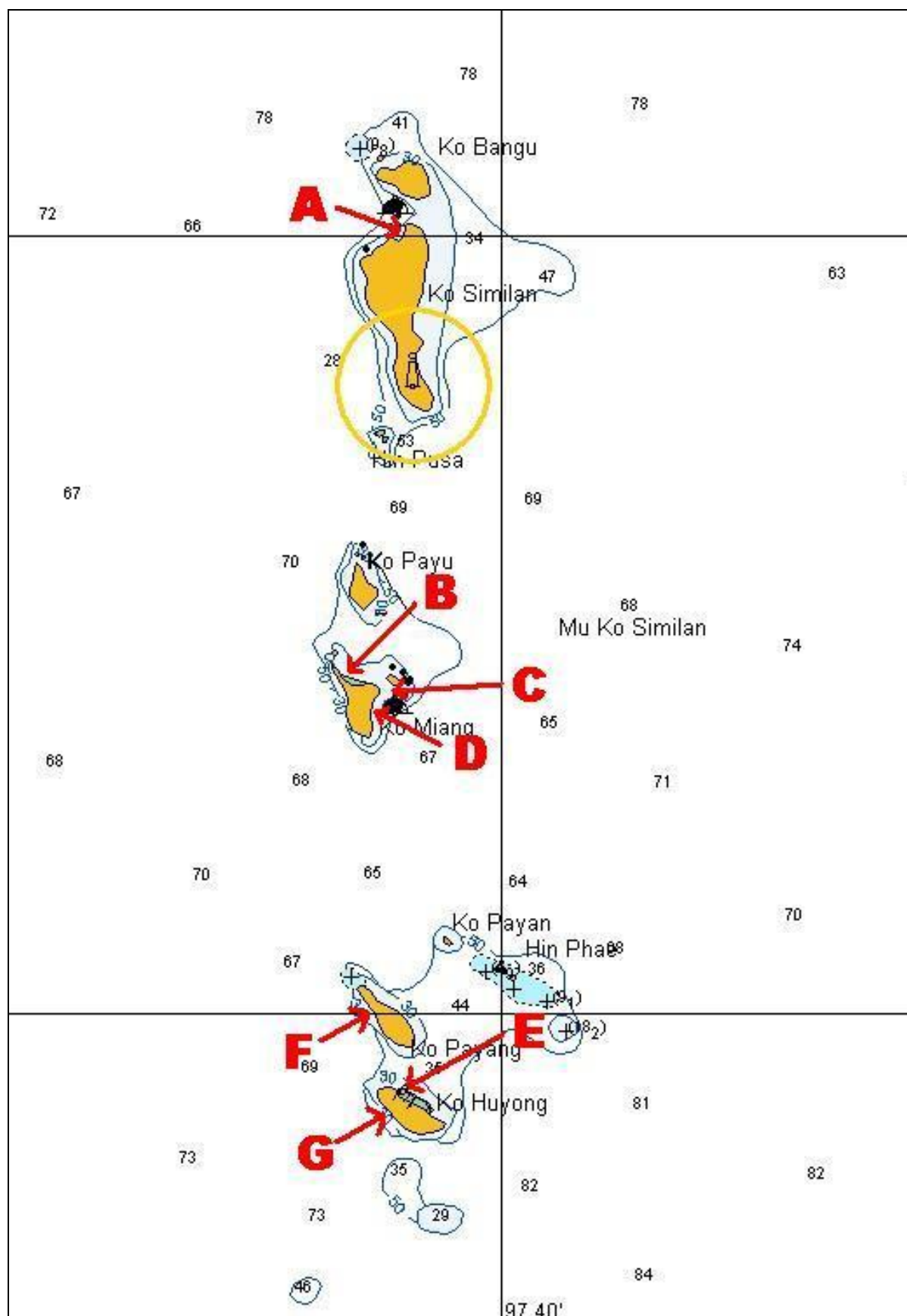
Charts in this guide are provided for reference only and should not be used for navigation purposes.

All GPS positions are based on WGS84 datum.

Similan and Surin Islands planning chart



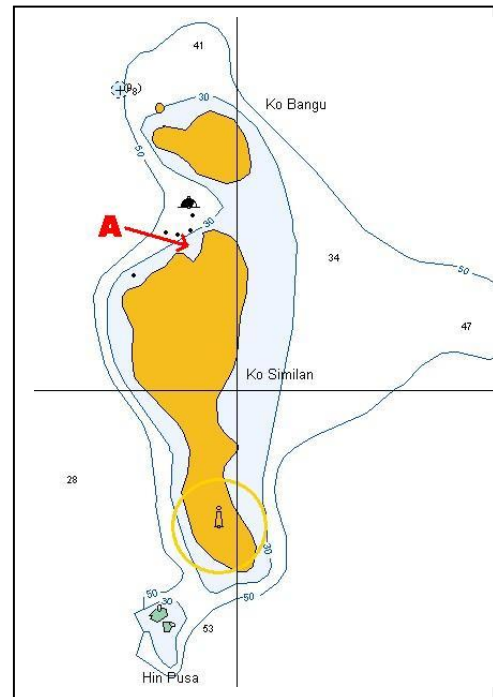
Ko Similan group



Cruising Guide to the Similan Islands

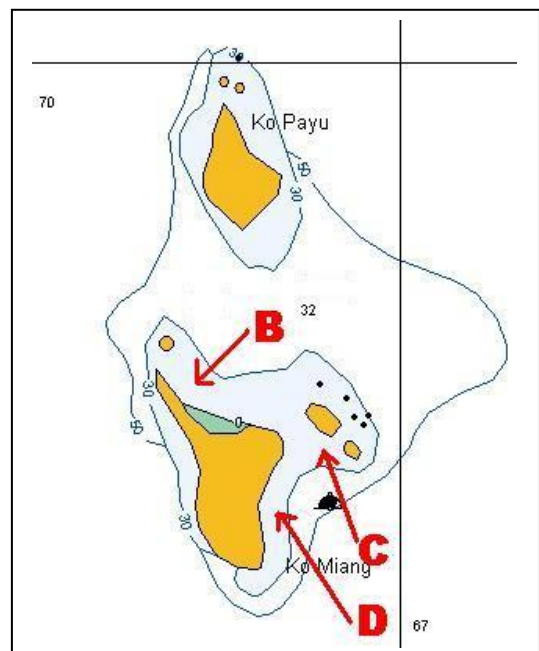
SIM-A Ko Similan – Donald Duck bay 008deg 40.00min N 097deg 38.65min E

The Northwestern bay of Ko Similan is known as Donald Duck bay after the large boulder formation piled up on a hill overlooking the bay. This is one of the best protected anchorages in the area during the Northeast season when the Similan islands National park is open to visiting yachts and dive boats. There are moorings laid in the bay but the dive boats have priority and will ask that you move off if they find you on a buoy. If there are no spare buoys you will have to anchor a good distance offshore in 12 to 15 metres being careful to avoid dropping your anchor on the coral. This is a favoured evening spot and it is possible to get dive tanks filled by asking one of the dive boats. There is a path leading from the beach up to the boulder formation from where you get a good view of the bay.



SIM-B Ko Miang North 008deg 34.40min N 097deg 38.00min E

The North anchorage in 10 metres is very pretty but is exposed to the Northeast winds and is not suitable as an overnight stop. There is a ranger station ashore with bungalows and a small restaurant and several paths into the island. Just off the sandy beach there is great snorkeling across a reef that extends up to 300 metres from the shore.



SIM-C Ko Miang East 008deg 34.15min N 097deg 38.65min E

The Eastern anchorage is tucked in behind the two offshore islands and has reasonable overnight shelter but beware of strong currents if swimming and snorkeling. Anchor in about 10 metres.

SIM-D Ko Miang Southeast 008deg 33.85min N 097deg 38.40min E

This anchorage is protected from all but the strongest Northeast winds. Anchor in 8 to 10 metres for more great snorkeling.

SIM-E Ko Huyong Northeast 008deg 29.10min N 097deg 38.70min E

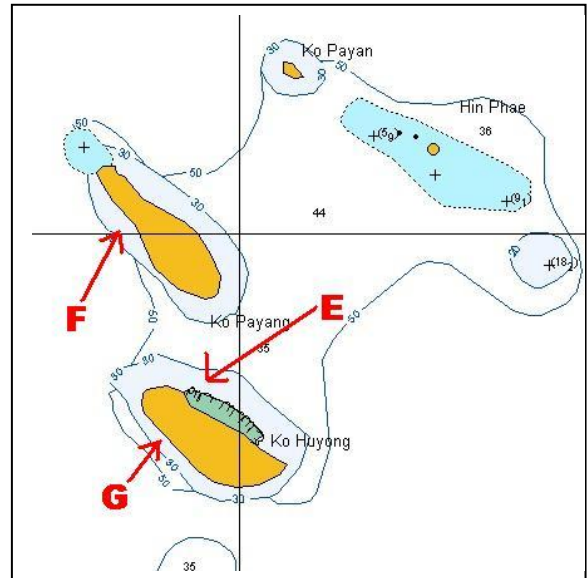
Anchor in 8 to 10 metres. There is a great reef and excellent snorkeling but no protection overnight.

SIM-F Ko Payang 008deg 30.05min N 097deg 38.30min E

Anchor in the small patch of shallower water for protection from stronger Northeast winds.

SIM-G Ko Huyong Southwest 008deg 28.75min N 097deg 38.50min E

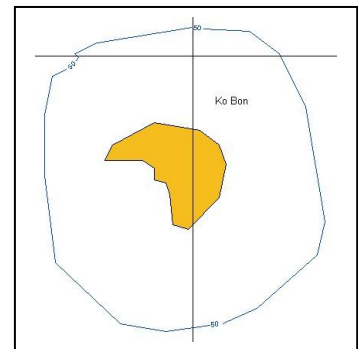
This is another spot where you can find shelter in strong Northeast winds. Anchor in 10 metres.



Ko Bon and Ko Tachai

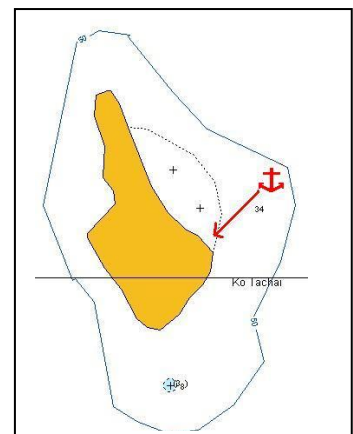
SIM-H Ko Bon 008deg 49.40min N 097deg 48.00min E

Approximately 15 miles Northeast of Ko Similan is Ko Bon. There is very deep water all around this island so it is not possible to anchor but it does make an interesting spot to stop for a swim. To the Southwest side of the island is a deep bay with calm sheltered water from where you can see straight through a cave to the other side of the island.

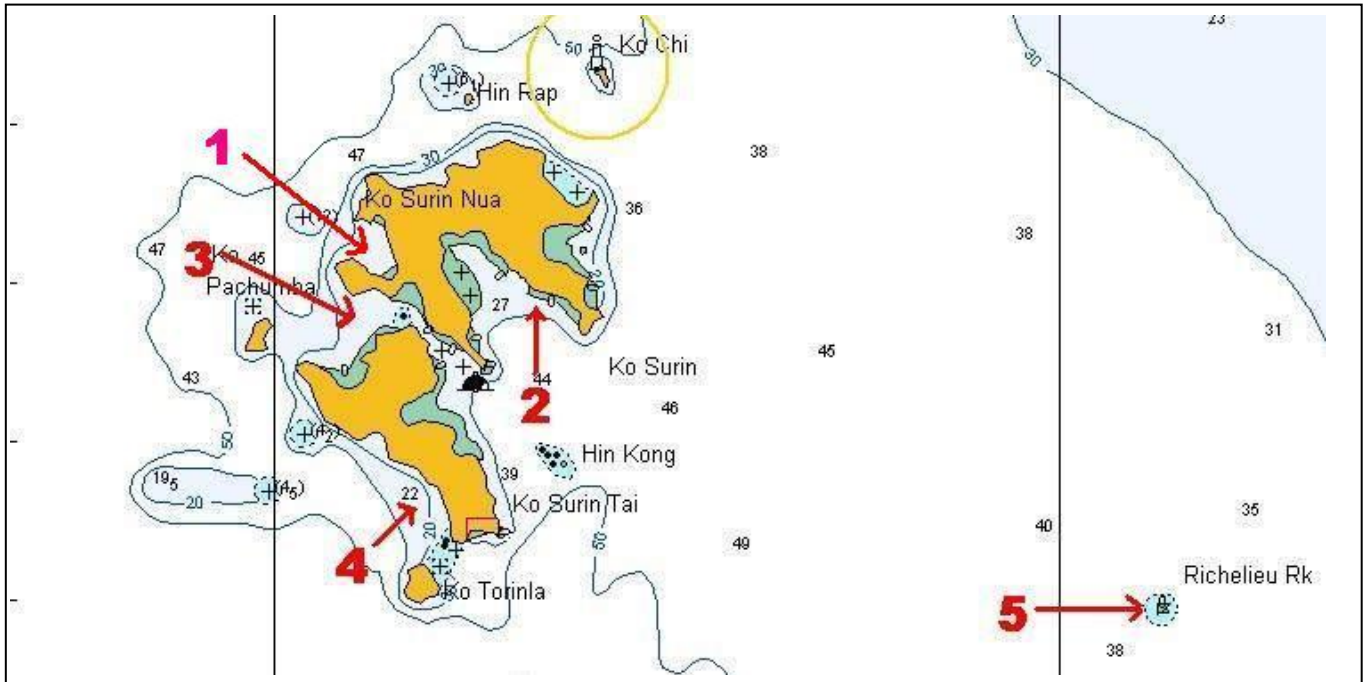


SIM-I Ko Tachai 009deg 04.20min N 097deg 49.05min E

Roughly midway between the Similans and Surin islands this is good as a lunchtime stop only. Anchor in 12 to 15 metres slightly North of the Eastern tip of the island. Ashore there is a small beach where you can very often find small manta rays swimming in the shallow waters.

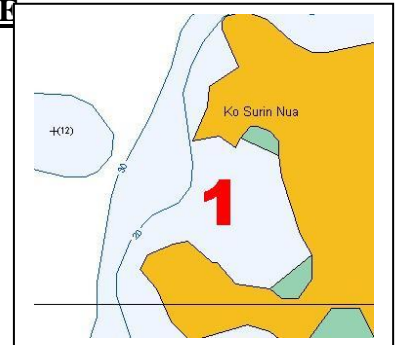


Ko Surin Group



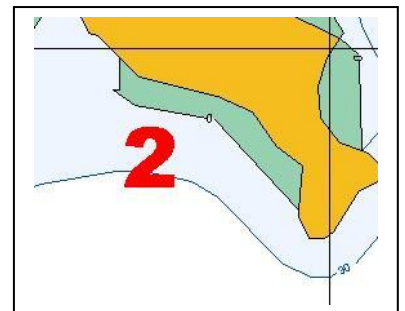
SUR-1 Ko Surin Northwest 009deg 26.50min N 097deg 51.20min E

The Northwestern anchorage in the western bay of Ko Surin Nua is a great spot for a quiet night under the stars. Anchor in 12 to 15 metres.



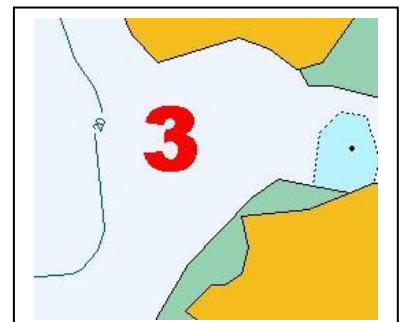
SUR-2 Ko Surin East 009deg 25.65min N 097deg 53.40min E

The Eastern anchorage in 15 metres is very pretty but must be approached with extreme caution as the bottom rises up very quickly. Good snorkeling can be found across the reef that extends from the shore.



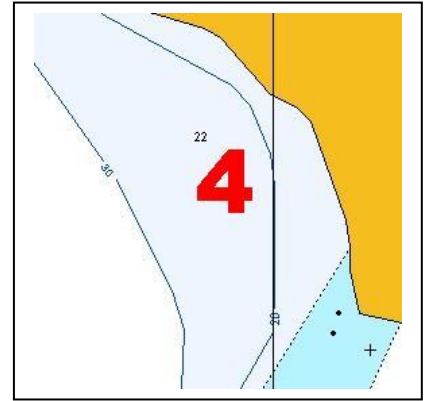
SUR-3 Ko Surin West 009deg 25.60min N 097deg 51.20min E

The Western anchorage is in the bay between the two islands. The channel between the two islands is very shallow and yachts cannot pass through it. On the North side of the channel on the Southern tip of Ko Surin Nua is the National park headquarters with bungalows and a restaurant.



SUR-4 Ko Surin South 009deg 23.10min N 097deg 52.00min E

This anchorage offers good protection from strong NE winds.
Anchor in 10 to 15 metres.



SUR-5 Richelieu rock 009deg 21.90min N 098deg 01.25min E

A great spot for diving but anchoring is impossible as the small exposed rock is the top of a steep underwater pinnacle that sits in over 40 metres of water. There is a mooring buoy that can be used if free but someone has to remain on board the yacht.